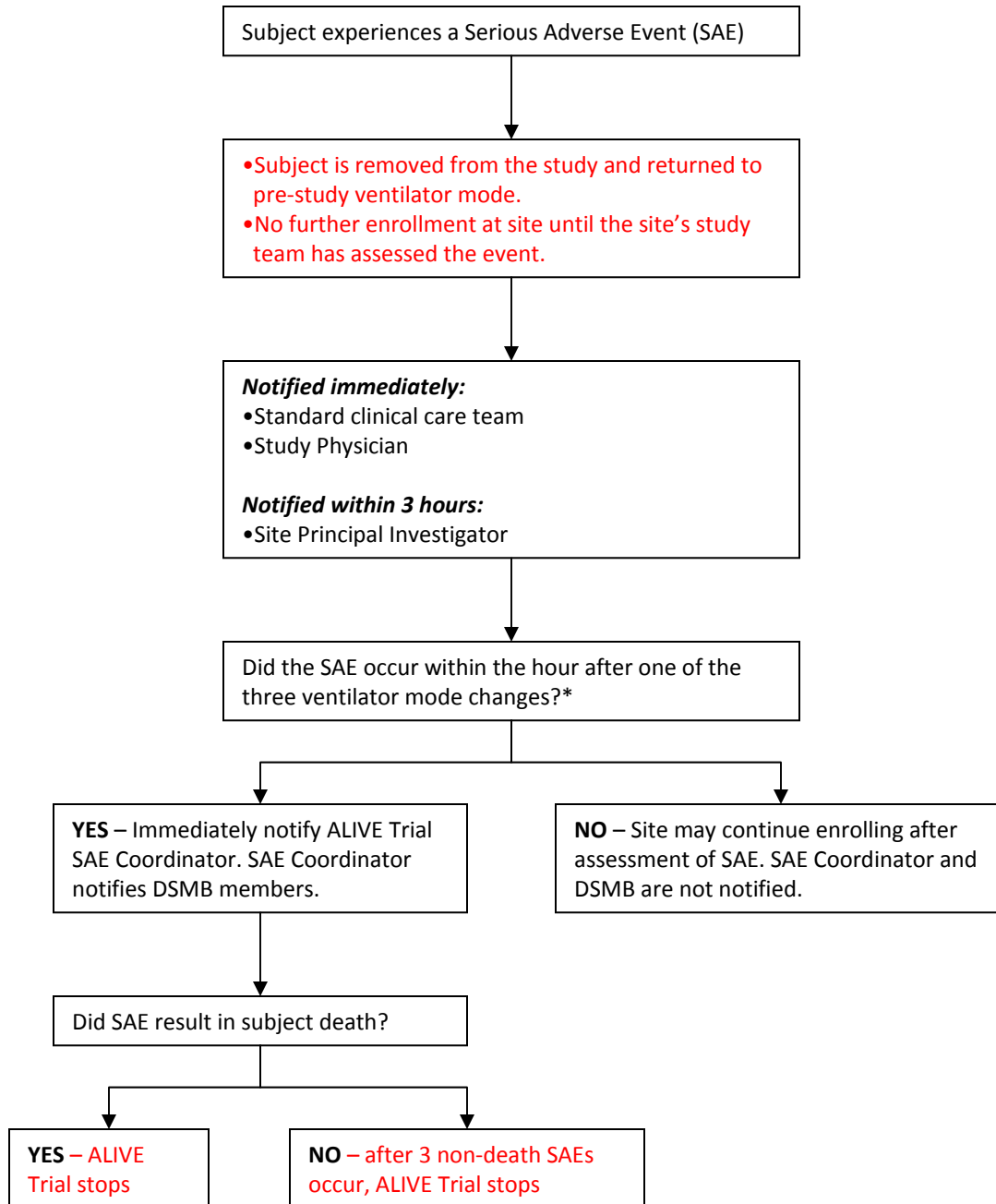


ALIVE Trial Stopping Rules



*Ventilator Mode Changes:

- 1) Pre-study standard clinical mode to 1st study mode
- 2) 1st study mode to 2nd study mode
- 3) 2nd study mode to post-study standard clinical mode

If the standard clinical mode is the same as a study mode, this does not constitute a ventilator mode change. For example, if the subject is on APRV as part of standard clinical care prior to the study and is randomized to APRV as the first study setting, this would not be a ventilator mode change.